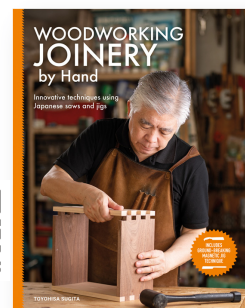


Sugita's Woodworking Method

Woodworking Joinery by Hand

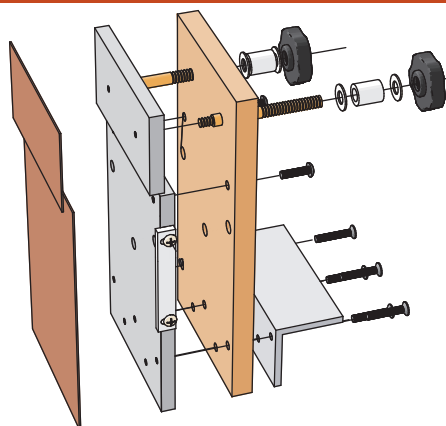


YouTube <https://youtu.be/rZ9jR1KyVWU>

Product Information The following products are manufactured for Sugita's Woodworking Method.

MIRAI Aluminum Ripping Guide JPY21,000

Patent. P



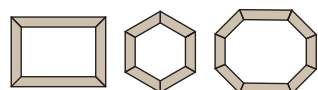
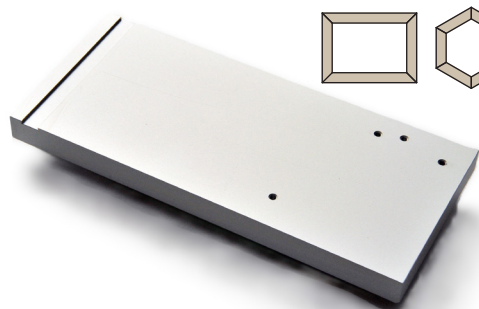
The Aluminum Ripping Guide is the most important tool in the book *Woodworking Joinery by Hand*, in which Sugita's Woodworking Method is represented. It works to position the saw blade to cut from the end of the wood. The positioning accuracy can be precisely determined in 0.1mm (0.003937") increments. It can be used for ripping a variety of wood joints. It is also especially suitable for accurately cutting tenon thickness (see page 230 of the book). The New-type ripping guide shown on page 18 of the book is a self-made version, but this is a commercial version with the same and additional functionality. The Ripping Guide can be changed from right-handed use to left-handed use.

A demonstration is available on YouTube for cutting a mortise & tenon joint and also for spline grooving on a photo frame



MIRAI Aluminum Ripping Guide 1/2 and 2/2
<https://youtu.be/d-mAKN8SO9g>
<https://youtu.be/9E1Yp-oXUOo>

MIRAI Aluminum Cross Cut Guide 2025 JPY15,000



Manufactured with high precision by machining from 18mm thick high-precision aluminum plate. Both left and right edges can be used as guides, enabling more accurate right-angle cuts. In addition to 45° cuts, it can also produce hexagonal and octagonal frames. As described in the instruction manual, it can cut dado joints and cross half lap joints. This utilizes the author's patented "self-aligning" function..

■Shot Blasted and Anodized High-Precision Aluminum Plate
 Body: 250mm×110mm×18mm ■Weight: approx.1,300g
 Includes two magnetic sheets, two M4 screws, and a fence.



Cutting out the octagonal frame. Each part was pre-cut to the same length and at right angles before performing this task.

MIRAI α265 Non-Set Flush Cut Pull Saw Replacement Blade JPY1,700



Pistol-type grip JPY1,700

See how to install saw blade to the grip.

<https://z-saw.co.jp/en/Howto.html>



This is a special blade for use with Sugita's Woodworking Method, which is used and recommended by the author of the book *Woodworking Joinery by Hand*. It is recommended to purchase at least two or more of these saw blades, as they can also be used as spacers. For more information, please

read the book, page 12 onwards.

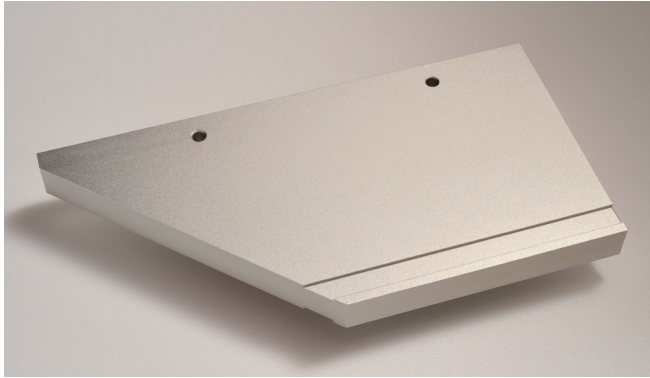
I have tested the majority of flush cut pull saw blades sold in Japan in the past, and the performance of Sugita's Woodworking Method requires a saw blade with the saw kerf parallel to the ripping guide when the stock is clamped to the ripping guide and

the cut is made from the end of the stock. In this test, most saw blades did not have saw kerfs that were parallel to the guide. The only saw that performed well was a product named Craft 145. However, this saw is a short saw with a blade length of only 145 mm, making it unsuitable for applications such as furniture making. So I asked the manufacturer to produce a MIRAI Alpha 265 flush cut pull saw blade. The performance of this saw blade is excellent. I

invite you to make bridle joints (page 87) with the two saw blades and compare them - you will be amazed at the performance of the MIRAI α265 flush cut pull saw blade. This saw blade is specially manufactured for Sugita's Woodworking Method.

Specifications: Blade Length:265mm Pitch:1.75mm (15TPI) Thickness:0.60mm Kerf:0.60mm

MIRAI Aluminum Miter and Cross Cutting Guide JPY19,000



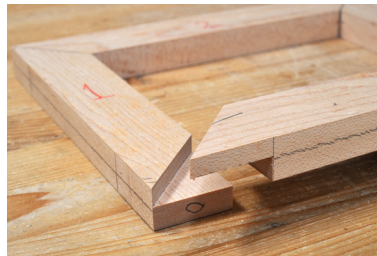
This is an aluminum version of the Miter Cutting Guide introduced in the book Woodworking Joinery by Hand starting from page 172. The user needs to supply and prepare the fence, magnetic sheet, T-Shape Stopper and the auxiliary board. The Aluminum Miter and Cross Cutting Guide is suitable for those who are familiar with Sugita's Woodworking Method described in the book.



YouTube

<https://youtu.be/9E1Yp-oXUOo>

- 260mm×130mm×20mm (high precision aluminum plate) ■Weight: approx. 1.350g
- Maximum width of material that can be cut: approx. 105mm



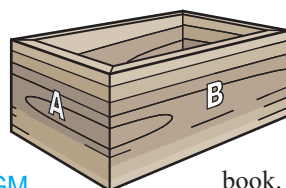
MIRAI Aluminum Case Miter Cutting Jig JPY21,000



A box cut with a case miter joint will have a clean and beautiful appearance because the ends are concealed, but making this can be a difficult task.

This product also follows the idea of Sugita's Woodworking Method. The aim is to complete the miter joint by simply cutting with a hand saw, without trimming to fit with a hand plane or other tools. The results are in line with this aim. When cutting the board, the saw is tilted 45° to the right and left, which may make it a little difficult to cut, so special attention needs to be paid to pulling the saw straight. The Aluminum Case Miter Cutting Jig is also designed to use with a flush cut saw. We recommend MIRAI α265 Flush Cut Pull Saw Blade. The Aluminum Case Miter Cutting Jig is suitable for those who are familiar with Sugita's Woodworking Method described in the

- Thickness 18mm high-precision aluminum plate.
- Maximum width of a board that can be miter cut : 140mm=5-1/2" (This can be extended with a pair of shop made metal plates with magnetic sheets attached.)
- The fence and magnetic sheets are not included in this product



book. The video explains how to cut the box from a single piece of stock so that the grain of the three corners of the box are connected as shown in the diagram on the left.



<https://youtu.be/R6TizUIR-Ns>

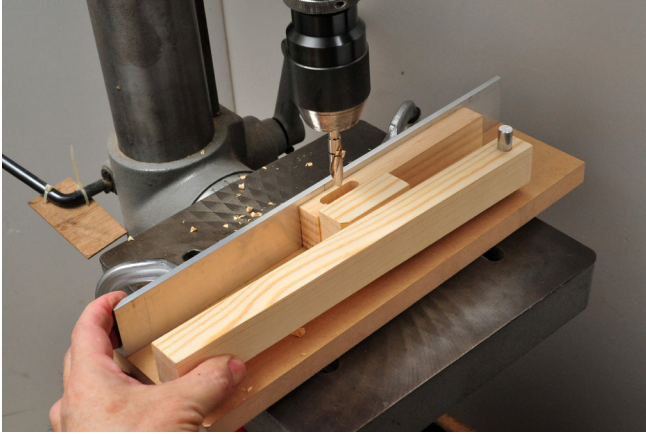


<https://youtu.be/4KoKDhR22GM>



<https://youtu.be/cTEdJ7e2hnM>

MIRAI Mortising Jig Assembly Kit JPY5,000



holds the workpiece in place and drills the hole. Releasing the lever releases the workpiece, which is then shifted to the next drilling position and the lever is used to secure the workpiece again. This repetitive process can be carried out in a short amount of time without the use of clamps. The tenon that fits the mortise created by this jig is cut with the MIRAI Aluminum Ripping Guide.

This jig is an easy-to-make kit of the homemade jig described in the book. The Mortising Jig is used to cut mortises on a drill press. Using the action of leverage, the lever instantly and firmly



YouTube

<https://youtu.be/V0eXpRUOeHQ>

Case Miter Cutting Guide Assembly Kit JPY4,000



introduced in the book and is easy to make. Two miter rulers are required for assembly. Please read the book for instructions.



YouTube

<https://youtu.be/1zOPzzDCsvQ>

This product is also intended for people who have already read the book, Woodworking Joinery by Hand and are familiar with Sugita's Woodworking Method. This is a kit of the homemade jigs



Products are Made in Japan



U.S. Sales and Distribution William Fehrenbach Contact: wjfbach@gmail.com <https://thewoodworkingminimalist.com/>



MIRAI Toyohisa Sugita 3-73 Haramachi, Shinjuku-ku, Tokyo 162-0053 Japan Contact: mirai@momo.so-net.ne.jp



Je recherche un distributeur en France. Si vous êtes intéressé, veuillez me contacter.



Ich suche einen Handelsvertreter in Deutschland. Bei Interesse wenden Sie sich bitte an mich.



I am seeking a sales agent in the UK. If you are interested, please contact me.



I am seeking a sales agent in Canada. If you are interested, please contact me.

Toyohisa Sugita
mirai@momo.so-net.ne.jp